

6V RCA
PREOUT



INDIGO-862DSP

DSP BLUETOOTH / USB / FM RECEIVER

USER MANUAL



DSP



PLEASE READ CAREFULLY BEFORE USING

Copyright

“△”, “△URA△” are registered trademarks. All rights reserved. This document, entirely or in any part of it, is prohibited to reproduce, as well as copy without the preliminary written permission of the manufacturer. All trademarks, logos and names of products used on the packaging and in this document are logos or registered trademarks of the respective companies. Trade brands, logos and products are used only for editorial purposes and only in the interests of such companies.

Disposal instructions

Directive Weee 2012/19/EU on waste from electrical and electronic equipment. The electrical equipment that has served its term should not be thrown out with the rest of the household waste. Please hand over it in secondary processing. To obtain the necessary information, contact the local authorities.



Important!

All illustrations given in this instructions are schematic images of objects and may slightly differ from their real appearance.

Due to the continuous finalization and improvement of the product, all technical characteristics, as well as the appearance, can be changed without prior notice.

Service life

In accordance with the law, the service life of 3 years from the date of sale of the device with a store is set for this device. The value of the service life is in no way related to the real life of the device and is exclusively an obligation in relation to the legal requirements of the Law on the Protection of Consumer Rights. Given the high quality control, reliability and degree of safety of the device, the actual duration of operation can significantly exceed the officially established service life, subject to the consumer of the rules established by the manufacturer.



Precautions.....	3
Equipment and installation	4
Connection	5
Appearance, controls	6
Sizes.....	7
Remote control.....	7
Basic operations	9
Menu:	
Sound settings	9
Preservation of DSP settings (presets)	13
Display settings	13
Tuner settings	13
Bluetooth settings	14
System settings	14
Sources:	
Radio.....	15
USB	16
Bluetooth	17
AUX	18
Update by (firmware), reset of settings	18
Appendix for Android and iOS	18
Programming buttons on the steering wheel	18
Specifications.....	20
Warranty coupon	21

Precautions

User manual contains important security recommendations and information about the proper operation of the device. Please carefully follow all the instructions given in this guide.

1. When installing the device, avoid places with high temperature, humidity, or places where there is a lot of dust.
2. Make sure that the device and, in particular, its accessories for installation, are inaccessible to children.
3. Do not drop the device and make sure that it is not subjected to blows, as this can lead to its damage.
4. The manufacturer does not bear any responsibility for any data loss that arose due to damage to this device, its repair or for any other reason.
5. Do not disassemble the device yourself. This can lead to cancellation of the guarantee.
6. Do not use alcohol, solvents or gasoline to clean plastic parts and device display. For cleaning, use only dry soft fabric.
7. Avoid contact of the device with liquids.
8. The product is designed for use only with 12-volt electrical systems with negative grounding. The use of a device in systems with a positive grounding and/or voltage different from 12 volts can lead to damage to the car and device.

IMPORTANT!

The device is equipped with high-voltage RCA outputs, the signal level width of which reaches 6 volts!

When connecting external amplifiers:

1. Be sure to set the input sensitivity control (GAIN) on external amplifiers to the extreme left position (minimum)!
2. adjust the input sensitivity level correctly!

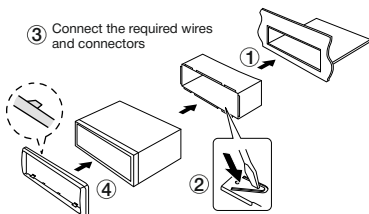
When the required level is exceeded, the amplifier begins to operate with distortion!



Open the package and make sure that there are inside:

1. USB resaver - 1 pc.
2. The remote control - 1 pc.
3. Keys for removing the receiver - 2 pcs.
4. ISO-connector - 1 pc.
5. Manual
6. Sticker

Installation of the device



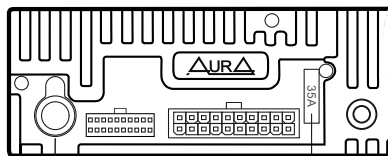
1. Install the mounting casing in the hole of the 1din standard, provided by the manufacturer. If the regular place has a 2DIN size, use transitional frames and adapters of the **AURA** brand.
2. Light out the metal tongues on the mounting casing to fix it in place.
3. Check electrical connections, connector or individual wires (depends on the configuration of a particular car model). Connect the main connector to the device. Check The system performance before fixing in the mounting casing.
4. Insert the device into the mounting casing and push it inward to fixation by click.

In some brands of cars (for example, TOYOTA, HONDA, ...), the device is mounted by screws to standard brackets. In this case, the mounting casing is not used.

WARNING! Yellow (11 and 10) and black (2 and 1) power wires must be connected directly to the corresponding battery terminals using a copper cable with a cross section of at least 4 mm (12GA)! Connecting to the standard wiring or to the standard ISO connector is not allowed!



WARNING!
**MINIMUM LOAD FOR
SPEAKER OUTPUTS 4 OHM!**



Entrance for connecting the radio antenna
(not included in the kit)

Entrance for connecting an external microphone
(Aura AMM-Mic1, is not included)

Steering wheel buttons connection (SWC K1)

Steering wheel buttons connection (SWC K2)

Steering wheel buttons connection (SWC macca)

RCA-output, 7L / 8R channels

RCA-output, 5L / 6R channels

RCA-output, 3L / 4R channels

RCA-output, 1L / 2R channels

Left channel (5L)

Right channel (6R)

Left channel (3L)

Right channel (4R)

Left channel (1L)

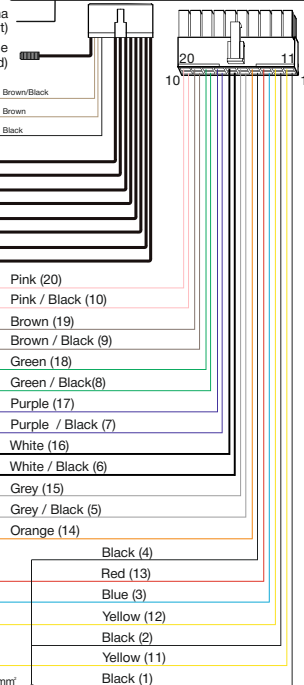
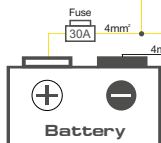
Right channel (2R)

To the side light switch (+12v.)

Mass

+12v when ACC is on

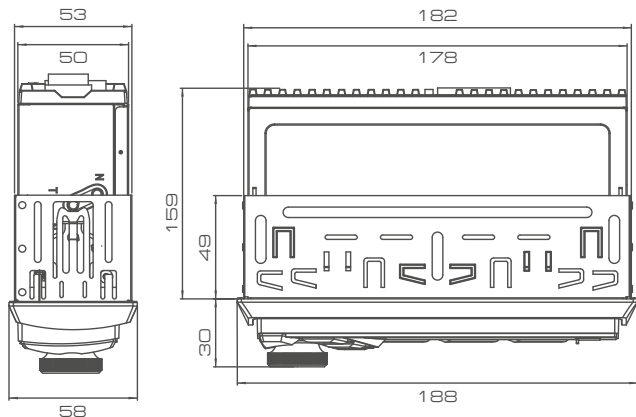
Control wire +12v. (remote)



IMPORTANT! It is necessary to install an additional fuse with a face value of 30A no further than 30cm from a plus battery terminal!



1. Power on / Power off / Source selection
2. IR receiver
3. LCD display
4. USB port
5. Next track / Fast forward / Radio settings
6. Volume control / Switch settings / Confirm selection
7. Previous track / Fast rewind / Radio settings
8. Return / Search
9. Microphone
10. MUTE
11. Preset button 1 / Next folder
12. Preset button 2 / Previous folder
13. Preset button 3 / Repeat mode
14. Preset button 4 / Shuffle mode
15. Preset button 5 / Pause
16. Preset button 6 / Track scan mode
17. Display information type / Display off (press and hold for 2 seconds)
18. Accept / End call / Voice assistant / Switch radio bands (FM1/2/3)
19. Resetting the device to factory settings (reset)
20. AUX input

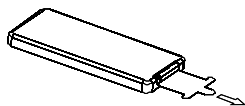


Remote control

Removing the battery protection (CR-2025).

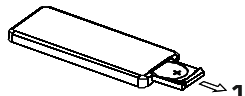
The remote control comes with a battery protection.

The remote control will not operate until the protection is removed.



Replacing the battery:

When the lithium battery has lost capacity, replace it as shown in the figure.

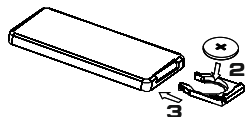


1. Pull the battery holder out of the remote control in the direction of arrow 1.

2. Replace the old battery with a new one.

Observe the polarity! Make sure that (+) is on top!

3. Insert the battery holder into the remote control.





1. ⏻ Turning on / off the device
2. Volume adjustment
3. Switching radio ranges
/ 📶 Reception of a call
4. ⏮ Previous track / rewinding back
/ Radio setting up
5. Choosing a source
6. ⏭ Next track / rewinding forward
/ Radio setting up
7. Muffling sound (mute)
8. 📞 Call completion / clock
9. Pre -configuration button 1
/ ⏸ Pause
10. Preliminary settings button 2
/ Skaging mode of tracks
11. Preliminary settings button 3
/ Repeat mode
12. Preliminary settings button 4
/ Random play mode
13. Pre -configuration button 5
/ Switch to 10 tracks backward
14. Pre -configuration button 6 / Switch to 10 tracks forward
15. Radio station reception (mono / stereo)
16. Loud subtle (LOD)
17. Memory scanning / Automatic search and
memorization of stations (AMS)
18. Choosing a source
19. Choosing the preset of equalizer
20. Lowering of the sensitivity of the tuner (LOC)



Using remote control (PDU):

- Place the radiating window of the remote control in the direction of the sensor window on the device.
- A working angle for receiving the signals of the PDU is about 30 degrees.
- The distance between the radiation window of the DPD and the touch window of the device. It should be less than 5 meters.
- The sowing nutrition element can lead to damage to the remote control.
- Store the nutrition elements in an inaccessible place for children!

Turning on / off

Press any button to enable the device.

Press and hold the button (1) **⏻** / **SRC** to turn off.

Volume adjustment

Rotate the volume control handle to set the desired level.

Choosing a source

Press the button (1) **⏻** / **SRC** to switch between sources

Reproduction: Radio -> USB -> Aux in -> Bluetooth.

Settings menu

Press the volume adjusting button (6) and rotate to select the necessary settings section: AUDIO (sound settings), DISPLAY (display settings), TUNER (radio settings), BLUETOOTH (Bluetooth settings).

To select the desired section, press the volume control handle.

AUDIO - audio settings

EQ setting

Custom - manual adjustment of 48-band equalizer (from -9 dB to +9 dB).

EQ reset - reset equalizer settings.

Presets:

**Flat, Classic, Rock, Pop, Easy,
Top 40, JAZZ, Vocal, Country,
Superbass, Natural, Electric,
Powerfull, Dynamic.**

Q-factor

Level

Setting the quality factor (Q) value.

Values: 1 - 10.

Link All Band

Yes - single Q value for all equalizer bands.

No - individual Q value for each equalizer band.

Bass boost

Enable and adjust bass boost (5 levels).

Loudness

Turning on and adjusting loudness (2 levels).

**Subwoofer**

Sub-W output - subwoofer on/off.

Sub-W level - adjusting the subwoofer volume level.

Sub-W stereo - 7/8 RCA subwoofer output operating mode (Mono/Stereo).

Fader

Adjusting the relative volume between 1/2 and 3/4 channels.

Balance

Adjust the relative volume between the left and right channels.

Volume Step

Select the volume adjustment step value (1/2/3).

Volume limit

Select the maximum possible volume level (3 - 62).

Power on vol.

Selecting the volume level when turning on the receiver (1 - 62).

X-OVER

1/2 Channel - Setting up HPF, LPF, filter type, slope, level and phase of 1/2 channels.

1/2-HPF FRQ - cutoff frequency: Off / 20Hz - 12.5kHz.

1/2-HPF TYPE - filter type.

1/2-HPF SLOPE - roll-off slope: 6 - 48 dB per octave.

1/2-LPF FRQ - cutoff frequency: Off / 20Hz - 12.5kHz.

1/2-LPF TYPE - filter type.

1/2-LPF SLOPE - roll-off slope: 6 - 48 dB per octave.

1/2 GAIN - 1/2 channel level, from -8 dB to 0 dB.

1/2 PHASE - electrical phase switching: 0° / 180°

3/4 Channel - Setting up HPF, LPF, filter type, slope, level and phase of 3/4 channels.

3/4 -HPF FRQ - cutoff frequency: Off / 20Hz - 12.5kHz.

3/4 -HPF TYPE - filter type.

3/4 -HPF SLOPE - roll-off slope: 6 - 48 dB per octave.

3/4-LPF FRQ - cutoff frequency: Off / 20Hz - 12.5kHz.

3/4-LPF TYPE - filter type.

3/4-LPF SLOPE - roll-off slope: 6 - 48 dB per octave.

3/4 GAIN - 3/4 channel level, from -8 dB to 0 dB.

3/4 PHASE - Electrical phase switching: 0° / 180°

5/6 Channel - adjustment of HPF, LPF, filter type, slope, level and phase of 5/6 channels.

5/6-HPF FRQ - cutoff frequency: Off / 20Hz - 12.5kHz.

5/6-HPF TYPE - filter type.

5/6-HPF SLOPE - roll-off slope: 6 - 48 dB per octave.

5/6-LPF FRQ - cutoff frequency: Off / 20Hz - 12.5kHz.

5/6-LPF TYPE - filter type.

5/6-LPF SLOPE - roll-off slope: 6 - 48 dB per octave.

5/6 GAIN - level 5/6 channels, from -8 dB to 0 dB.

5/6 PHASE - Electrical phase switching: 0° / 180°

7/8 Channel - adjustment of HPF, LPF, slope, level and phase of 7/8 channels.

7/8-HPF FRQ - cutoff frequency: 10Hz - 100Hz / Off.

7/8-HPF TYPE - filter type.

7/8-HPF SLOPE - roll-off slope: 6 -48 dB per octave.

7/8-LPF FRQ - cutoff frequency: 30Hz - 800Hz / Off.

7/8-LPF TYPE - filter type.

7/8-LPF SLOPE - roll-off slope: 6 -48 dB per octave.

7/8 GAIN - level 7/8 channels, from -8 dB to 0 dB.

7/8 PHASE - electrical phase switching: 0°/180°

X'over reset

Resetting the crossover settings.



IMPORTANT!

Setting up delays starts with the speaker furthest from the listening position (usually the subwoofer).

The furthest speaker does not need any additional delay.

The remaining speakers should be adjusted according to the difference between the distance from the furthest speaker and the distance from the calculated speaker to the listening position.

For example: the distance from the listener to the subwoofer is 220 cm, the distance from the listener to the front left HF speaker is 80 cm. The delay for the left HF speaker channel will be: $220\text{ cm} - 80\text{ cm} = 140\text{ cm}$. We enter the number 140 in the delay value of the left HF speaker channel.

Make the necessary calculations for all speakers, then make the settings in the AURA AUDIO app or in the receiver menu.

Delay - value for each channel.

Select the desired channel and set the required signal delay value. In MONO mode, the delay values for 7/8 channels will be adjusted synchronously.

Gain - signal level value for each channel.

Select the desired channel and set the required signal level. In MONO mode, the level values for 7/8 channels will be adjusted synchronously.

DTA reset

Reset delay settings.

Delay units

Select unit of measurement: centimeters or milliseconds.

You can save 6 independent settings (presets) and quickly switch between them.

IMPORTANT! Settings are saved when battery power is disconnected.

1. Adjust the equalizer, delays and crossover parameters.
2. To save the current settings to memory location "1", quickly press the "1" button 3 times.
3. Change the equalizer, delays and crossover settings.
4. To save the current settings to memory location "2", quickly press the "2" button 3 times.
5. Press the "1" button 2 times quickly to recall the settings saved in "Preset 1" from memory.
6. Press the "2" button 2 times quickly to recall the settings saved in "Preset 2" from memory.

Display settings

Color select

Setting the RGB backlight color.

All zone - select color for all 3 zones at once.

Zone 1, Zone 2, Zone 3 - choice of color for each of the 3 zones.

Dimmer

Backlight dimming settings, on/off, or choice of two dimming levels.

For the function to work correctly, the orange wire (A6) must be connected to the +12 volt circuit when the side lights are on.

Spectrum

Display frequency spectrum, on/off.

Tuner settings

Local seek

Local Search On/Off.

Stereo set

Stereo mode, on/off.

Regional

Select broadcast region (Europe, USA, Asia, Russia).



RDS set

Enabling the text messaging system.

TA set

Traffic reports.*

AF set

Transition to more stable frequencies.*

EON set

Automatic switching to channels with traffic announcements.*

Radio text

Displaying text information.

PI regional

Display station name.

PTY search

Search by program type.*

*The function is not supported in Russia.

BLUETOOTH

Enable

Turning on/off BT.

PIN-code edit

Changing the PIN code for pairing BT.

MIC gain

Adjusting the microphone level BT.

System

Language

Selecting the menu display language.

Clock - clock setting

Clock format - selection of clock display format (12 / 24 hours).

Clock adjust - setting hours / minutes.

Data format - select date display format.

Data set - setting date values.

Time sync - exact time synchronization via RDS.

Beep - button sound

Enable / disable sound when buttons are pressed.

AUX IN

Enable/disable AUX source.

SWC

Programming regular steering wheel buttons.

Detailed description of the programming procedure on page 18.

Car ACC - ignition lock type

Yes - set for the car with ACC position, the red power wire of the device is connected to the ACC position of the ignition switch.

No - set for the machine without the ACC position, the red power wire is connected to constant +12 volts.

The BT module and USB connector will be disabled when the device is turned off.

Animation - animation on display

Enabling and setting the delay interval before playing the animation on the device display: no / 15 / 30 sec. / 1 / 2 / 4 min.

Demo mode

Enable / disable demo mode.

Factory reset

Reset / return to factory settings.

Version

Viewing the current software version (firmware).

Radio

Storing and recalling radio stations

Press and hold one of the number buttons (1-6) to memorize the current radio station.

Press one of the number buttons (1-6) to recall the current radio station. It is possible to store 6 radio stations in each broadcast band.

Range selection

Press the (18) **BAND** button to select the broadcast band/radio stations: FM1, FM2, FM3 (VHF), AM1, AM2.

Automatic search for radio stations

Press the button (7) ◀◀ or (5) ▶▶ to quickly search for stations.



Automatic search and storage of stations

Press and hold the **SEARCH** button (8) for more than 2 seconds. The unit will quickly search and automatically store 18 FM and 12 AM radio stations with strong signals.

Manual search for radio stations

Press the button (7) ◀◀ or (5) ▶▶ to change the frequency step by step. Hold down the button (7) ◀◀ or (5) ▶▶ to enter the auto tuning mode.

USB

Connect the USB drive to the port on the front panel of the device.

Playback of supported file formats will start automatically.

The USB port supports charging mobile devices. Charging current is up to 1A.

IMPORTANT! There are many free and other software on the market for encoding FLAC, Mp3 and WAV files, and depending on the encoding status and file format, there may be low playback quality or noise during playback. In some cases, playback is impossible.

Switching tracks

Press the button (7) ◀◀ or (5) ▶▶ to move to the previous or next track.

Rewind

Press and hold button (7) ◀◀ or (5) ▶▶ to rewind back or forward..

Play/Pause

Press the button (15) ▶/|| to stop playback.

Press again to resume playback.

Scanning tracks

Press the (16) **INT** button to play in sequence for 10 seconds every track. Click again to stop scanning.

Repeat

Press the button (13) to select the repeat playback mode:

Repeat folder - Repeat playback of all files in the current folder.

Repeat one (repeat track) - repeat playback of the current file.

Repeat all (repeat all) - repeat playback of all files on the media.

Random play

Press button (14) to select random play mode:

Random folder / Random All / Random Off..

Switching folders and tracks

Press the button (12) ▼ or (11) ▲ to switch to the previous or next source folder.
Press and hold the (12) ▼ or (11) ▲ button to move 10 tracks backward or forward.

BLUETOOTH

Phone pairing

1. Turn on Bluetooth on your mobile device.
2. Find "VENOM-D862DSP" in the list of available BT devices and connect to it.
PIN code for authorization: 1234 .

WARNING! There is no need to pair with the **BLE** channel!

This may lead to unstable operation of the device!

3. If the connection is successful, the "BT" indicator on the receiver display will stop blinking and light up continuously.
4. The audio signal from the mobile device (music and calls) will be transmitted to the car speakers.

Outgoing call

Dial the subscriber's number on your phone.

The call will be made on speakerphone.

Incoming call

When an incoming call comes in, the caller's number will be displayed on the receiver's screen. Press the button (18) 📞 to receive a hands-free call.

Ending call

To reject an incoming call or end a conversation, press and hold the button (18) 📞.

Call to the last dialed number

Press and hold the button (18) 📞 on the receiver to call the last number in your phone's outgoing call list. Press the button (18) 📞 on the receiver to activate the Siri function.

Switching between phone and speakerphone

During a call, press the button (18) 📞 to transfer audio from the speakerphone to your phone or from your phone to the speakerphone.

Volume control

Rotate the volume knob during a call to adjust the volume level.

Press the (10) **MUTE** button to mute the sound.



The VENOM-D41DSP receiver supports Bluetooth audio transmission protocol. After successfully pairing your mobile device with the receiver, you will be able to play music from your phone on the car audio system. To switch tracks, press the buttons (7) ◀◀ or (5) ▶▶. To stop playback, press the button (15) ▶/||.

AUX

You can connect an external source to the 3.5mm jack on the front of the receiver using an AurA AUX cable (sold separately).

Reset settings

Press and hold for 10 seconds. button (19) **RST** to reset the device to factory settings.

Software update

We are pleased to offer the option to update the firmware to bring you the best performance and the latest features for your device. Please check the availability of the new software version on the website www.aurael.ru

Phone app

Most of the device settings are available in the AurA Audio mobile app for Android or iOS.

1. Install the AurA Audio app from Google Play or the App Store.
2. Connect your smartphone to the receiver via Bluetooth.
3. Launch the AurA Audio app to control the receiver.



AURA AUDIO
APP



Steering wheel buttons setup (Direct SWC)

This function can be implemented only in cars with resistive control buttons, the common wire of the buttons is connected to the car's "ground". For the correct operation of the steering wheel buttons, you must first connect the wires of the standard control panel.

Steering wheel button setup

The ground wire (WHEEL GND) of the standard control panel must be connected to the black wire "SWC ground", and the signal wires WHEEL KEY A and WHEEL KEY B must be connected to the wires "SWC K1" (brown/black) and "SWC K2" (brown), respectively.

The operating voltage range with the remote control buttons connected is from 0.3 to 3.3 V.

The minimum difference in operating voltages that are set at the remote control output after pressing the buttons must be at least 0.3 V.

Otherwise, in some cases, the buttons may be perceived as one.

WARNING!

The manufacturer does not guarantee the correct operation of the device with all car models and is not responsible for possible problems with the car or the device that arise in the event of incorrect connection of the device to the standard wiring of the car.

For the correct connection of the standard resistive remote control, consult with the official dealer of your car or contact a certified installation center.

Button setup:

1. Select the SYSTEM menu.
2. Enter the SWC section and select one of the two memory banks (SWC 1 or SWC 2).
3. Enter the ENABLE menu item and select YES.
4. Press the Back button and select PROGRAM.
The display will flash PRESS KEY 1).

Follow these steps:

1. Press the button on the steering wheel to assign a function to it.
The display will flash CHOOSE KEY 1.
2. Select one of the buttons on the head unit to which you want to assign a function.
If the assignment is successful, the display will flash PRESS KEY 2.
3. Repeat these steps (1-2) as many times as you want to assign functions to the buttons on the steering wheel.
4. Press the knob on the front panel to save the data.
The display will show SAVED x KEYS, then the unit will return to the SWC menu.

NOTE.

There are a total of 9 functions available for programming.

To disable the programmed button settings, enter the SWC menu and select the ENABLE option and set the value to NO.

**Main**

Operating supply voltage:	12 V (permissible range 9.6 – 15 V)
Fuse:	35 A
Maximum output power:	6 x 141 W (4 Ohms)
Rated output power:	6 x 71 W (4 Ohms)
Speaker Impedance:	4 Ohm
Frequency response:	20 Hz – 20 kHz
Display viewing angle:	vertical $\pm 30^\circ$, horizontal $\pm 15^\circ$
Audio signal input (AUX, stereo):	one (on the front panel, 3,5 mm)
Line output (RCA):	8-channel (4 pairs)
RCA output level:	up to 6 V
Maximum current consumption:	35 A
Mounting dimensions (W x D x H):	182 x 159 x 53 mm
Temperature (working):	from 0°C to +60°C
Humidity (working):	from 45% to 80%

USB

Supported media:	USB
Supported formats:	FLAC (16 bit), WAV, APE, AAC, MP3
File system:	FAT32
USB stick:	USB 2.0 / 3.0, до 256 Gb
ID3 Tag support:	English, Russian

Bluetooth

Version:	5.1
Profiles:	A2DP, AVRCP, HFP
Frequency:	2,4 Ghz

Radio FM, AM

Radio tuning memory:	18 FM, 12 AM
FM frequency range:	87,5 - 108,0 MHz
VHF frequency range:	65 - 74 MHz
AM frequency range:	522 - 1620 GHz
Antenna impedance:	75 Ohm

AUX IN

Audio input level:	500 mV (max 2 V)
--------------------	------------------

DSP:

Crossover	8 band, 10-12500 Hz, 6-48 dB/oct.
Equalizer	48 bands, 20-20000 Hz gain -9 дБ to +9 дБ, 0,1 dB step
Phase rotation	0 / 180°
Time delays	0-25 ms, 0-850 sm



WARRANTY CARD

Model name

VENOM-D862DSP

Serial No.

Buyer name

Buyer address
Phone No.

Sales date

Signature

Seller name/stamp



TERMS OF WARRANTY SERVICE

The manufacturer guarantees the high quality and reliability of the products provided that the technical requirements described in

Operating Instructions. This warranty is issued for a period of one year from the date of purchase and is provided in the event that the product is found to be defective due to inadequate quality of materials or workmanship of the manufacturer.

Obligations under this warranty are performed on the territory of the Russian Federation by the manufacturer, selling organizations - authorized dealers of the manufacturer and service centers indicated on the manufacturer's website.

The product is not subject to warranty repair if it has the following features:

1. The fact that water or other liquids get inside the product;
2. Incorrectly completed warranty card or its absence;
3. Unqualified installation (connection of the product is not appropriate power section of wires, placement in place, hindering product cooling).
4. Intervention in the design of the product.

In case of disputes for reasons not included in the above list, the decision is made by the Authorized Service Center after a technical examination.

Parts with a limited life span (batteries, fuse links, etc.) are not covered by this warranty.

This warranty is not valid if the product is used for industrial purposes. All terms of this warranty are in accordance with applicable consumer protection laws..

Additional information on the website www.aurael.ru

CE EAC



AURA AUDIO
APP



www.aurael.ru



Due to continuous product development and improvement, all specifications and appearance are subject to change without notice.

© AURA Electronics Inc. All rights reserved.